

# Essex County

## THE CHALLENGE

In Essex County, **89% OF INFANTS** ( BIRTH TO 2 YEARS OLD ) likely to need care don't have access to any regulated child care.

And **96% OF PRESCHOOLERS** ( 3-4 YEARS OLD ) likely to need care don't have access to a high-quality program. The lack of child care impacts **ALL OF US**. Without high-quality, affordable child care, children miss out on crucial early childhood development opportunities, parents can't get to work, businesses struggle to recruit and retain employees, and Vermont's economy suffers.

## OUR PROGRESS

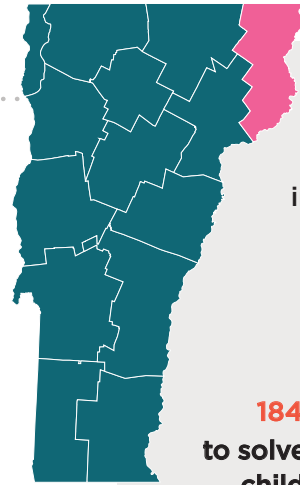
Essex County is the least-populous county in Vermont and New England. And yet, **53 people** in Essex County from all walks of life have joined together to support our shared movement.

## THERE'S MUCH MORE WORK TO BE DONE

Vermonters overwhelmingly believe that **child care is essential** — just like education and health care — and support increased state funding in child care. Now is the time for investment in this crucial infrastructure. **Now is the time for action.** Learn more and join the movement at [www.letsgrowkids.org](http://www.letsgrowkids.org).



PHOTO: MY SECOND HOME, BRADFORD, VT



## ESSEX COUNTY HAS

24 child care spaces for children under 5 in 4 child care programs that offer full-time, full-year child care (as of 2019).

## ESSEX COUNTY NEEDS

**184 more child care spaces** to solve the child care crisis for children birth to 5 years old.

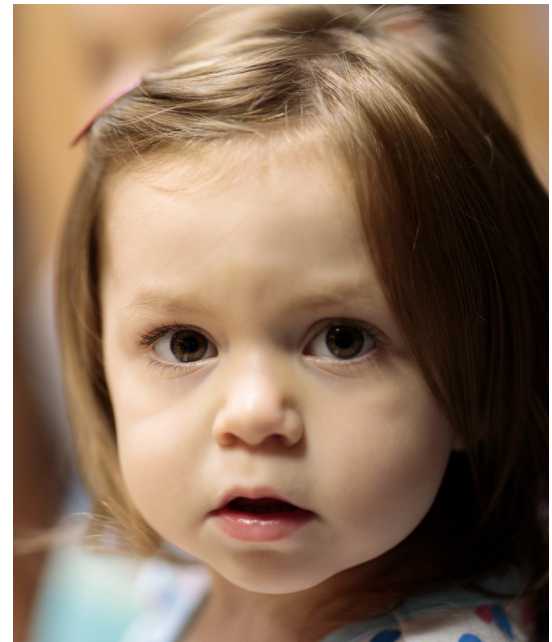


PHOTO: MISS ROBIN'S NEST, MONTPELIER, VT

## WHAT IS A CHILD CARE SPACE?

A child care "space" refers to a place for a child in a child care program. Let's Grow Kids uses "spaces" to track the availability of child care.

Not every family needs child care for a full week, so some spaces are shared between families who use part-time child care.

READ FULL REPORTS ON THE SUPPLY OF AND DEMAND FOR CHILD CARE IN VERMONT AT:

[letsgrowkids.org/resources-publications#SAS](http://letsgrowkids.org/resources-publications#SAS)

# The Whole Picture

## THE CURRENT STATUS OF CHILD CARE ACCESS FOR:

### INFANTS ( BIRTH TO 2 YEARS OLD )

- » **89% of infants likely to need care** don't have access to any regulated programs.
- » **94% of infants likely to need care** don't have access to high-quality (4- or 5-star) programs.

### TODDLERS ( 2-3 YEARS OLD )

- » **79% of toddlers likely to need care** don't have access to any regulated programs.
- » **90% of toddlers likely to need care** don't have access to high-quality (4- or 5-star) programs.

### PRESCHOOLERS ( 3-4 YEARS OLD )

- » **92% of preschoolers likely to need care** don't have access to any regulated programs.\*
- » **96% of preschoolers likely to need care** don't have access to high-quality (4- or 5-star) programs.\*

\*Preschool child care data does not include universal pre-K.

## ESSEX COUNTY CHILDREN LIKELY TO NEED CHILD CARE:

**72 Infants**  
**39 Toddlers**  
**97 Preschoolers**

### THE NUMBERS GAP .....

#### Child care spaces needed to solve the child care crisis:

- 64 for Infants
- 31 for Toddlers
- 89 for Preschoolers

#### Program hours of operation:

- First program opens: 6:00 AM
- Most programs open: 7:30 AM
- Most programs close: 5:30 PM
- Last program closes: 6:00 PM



PHOTO: MY SECOND HOME, BRADFORD, VT

READ FULL REPORTS ON  
CHILD CARE ACCESS AND AVAILABILITY,  
PLUS WORKFORCE DEMAND, AT:

[letsgrowkids.org/resources-publications#SAS](https://letsgrowkids.org/resources-publications#SAS)

### JOIN THE MOVEMENT!

Share your story, make a donation, sign our Petition,  
become a volunteer, and get involved at

[www.letsgrowkids.org](https://www.letsgrowkids.org)